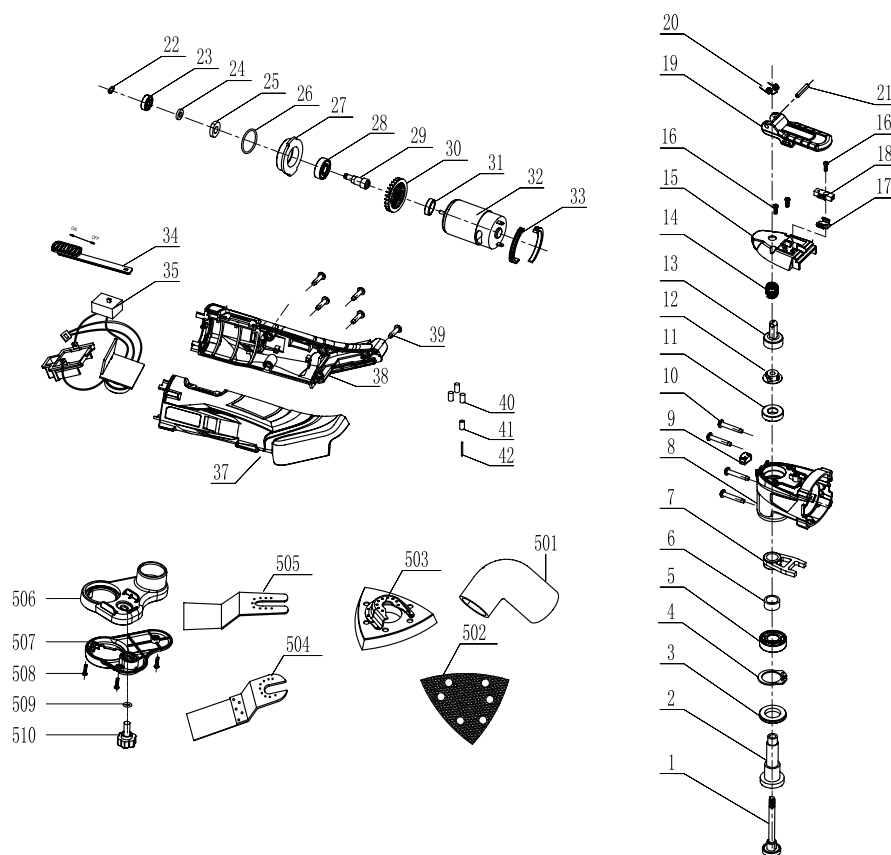


WALLPRO® MULTI TOOL SKIN CORDLESS 18V MTC-200

Spare Parts Diagram



■ WALLPRO® MULTI TOOL SKIN CORDLESS 18V SPARE PARTS

Code	Description	Code	Description
MTC2-1	Draw-in Bolt	MTC2-28	Bearing 608Z2
MTC2-2	Output Shaft	MTC2-29	Eccentric Shaft
MTC2-3	Sealing Ring	MTC2-30	Fan Blade
MTC2-4	Washer	MTC2-31	Rubber Sleeve
MTC2-5	Bearing 6001Z2	MTC2-32	Motor
MTC2-6	Steel Sleeve	MTC2-33	Damping Ring
MTC2-7	Fork	MTC2-34	Switch Button
MTC2-8	Gear Box	MTC2-35	Speed Controller Assy
MTC2-9	Light Cover	MTC2-37	Left housing
MTC2-10	Screw ST4*25-F	MTC2-38	Right housing
MTC2-11	Bearing 6900Z2	MTC2-39	Screw
MTC2-12	Nut	MTC2-40	Rubber Column
MTC2-13	Lock Pole	MTC2-41	Rubber Wheel
MTC2-14	Spring	MTC2-42	Round Pin
MTC2-15	Gear Box Cover	MTC2-43	Oil
MTC2-16	Screw M3*12	MTC2-44	Heat Shrink Tube
MTC2-17	Lock Sheet	MTC2-501	Connector
MTC2-18	Plastic Base	MTC2-502	Sanding Paper
MTC2-19	Trigger	MTC2-503	Sanding Base
MTC2-20	Spring	MTC2-504	Blade
MTC2-21	Round Pin	MTC2-505	Scraper
MTC2-22	Washer	MTC2-506	Vacuum Tube Upper Cover
MTC2-23	Bearing 625	MTC2-507	Vacuum Tube Lower Cover
MTC2-24	Plastic Washer	MTC2-508	Screw ST3*8
MTC2-25	Balance Block	MTC2-509	O ring
MTC2-26	O Ring	MTC2-510	Screw Bolt
MTC2-27	Middle Cover		

*Use only genuine Wallpro® parts on Wallpro® brand power tools. Using other brand parts on Wallpro® tools may affect the operation of the product and void warranty. Repairs undertaken by parties other than a registered repair centre may void the product warranty. Please contact Wallboard Tools Customer Service to locate your nearest repair centre.