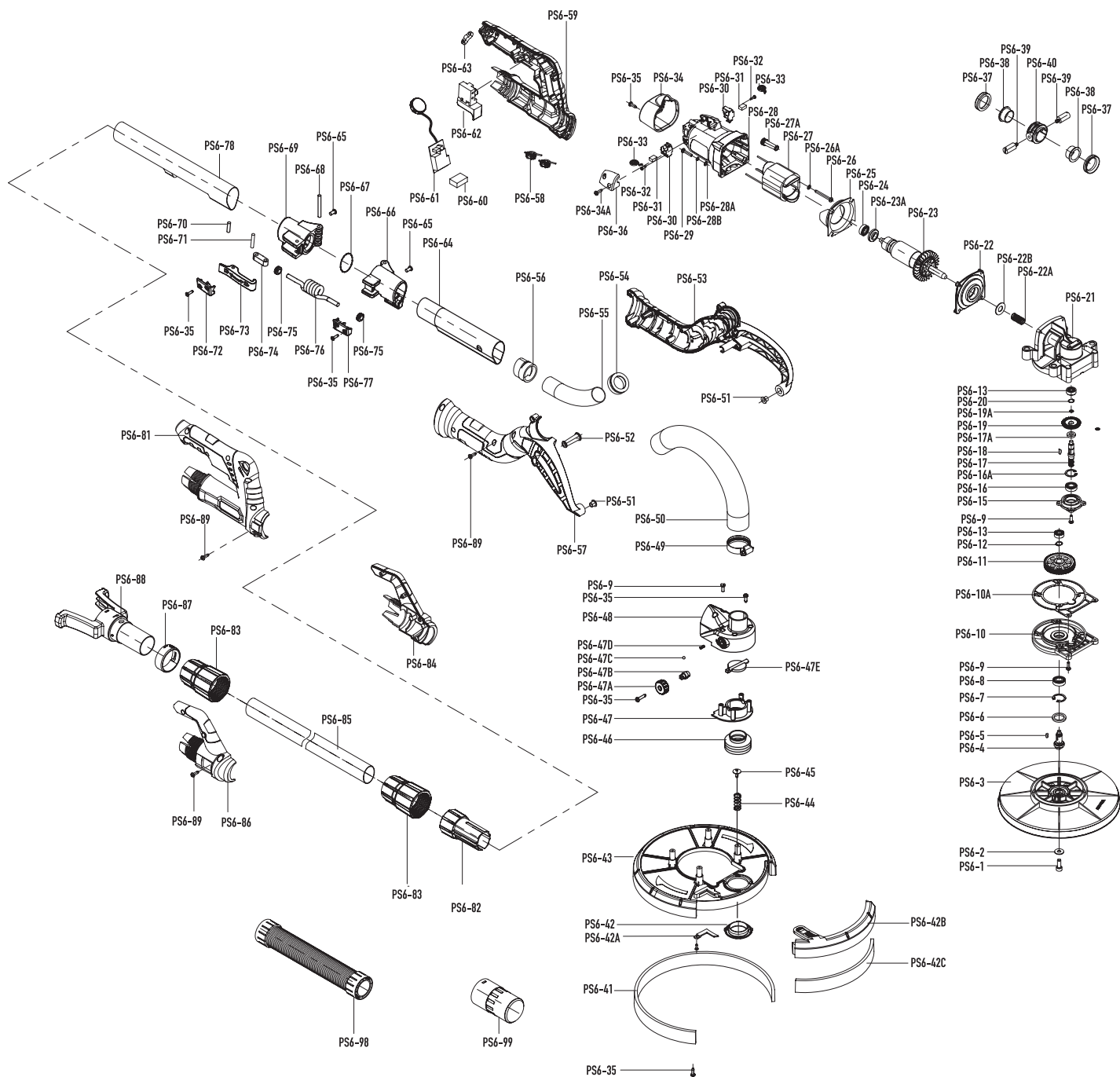


# WALLPRO® EXTENDA SANDER PS-600

Spare Parts Diagram



\*Use only genuine Wallpro® parts on Wallpro® brand power tools. Using other brand parts on Wallpro® tools may affect the operation of the product and void warranty. Repairs undertaken by parties other than a registered repair centre may void the product warranty. Please contact Wallboard Tools Customer Service to locate your nearest repair centre.

**■ WALLPRO® EXTENDA SANDER SPARE PARTS**

Code	Description	Code	Description
PS6-1	Screw	PS6-42A	Press Plate (for sleeve)
PS6-2	Washer	PS6-42B	Side Cover
PS6-3	Hook & Loop Adaptor	PS6-42C	Bush Skirt (small section)
PS6-4	Output Shaft	PS6-43	Sanding Pad Cover
PS6-5	Flat Key	PS6-44	Compressed Spring
PS6-6	Oil Seal	PS6-45	Washer
PS6-7	Collar	PS6-46	Waved Sleeve
PS6-8	Ball Bearing	PS6-47	End Block (for dust collection cover)
PS6-9	Screw M4*12	PS6-47A	Suction Power Adjusting Ring
PS6-9A	Screw M4*10	PS6-47B	Connection Shaft
PS6-10	Bearing Cover (big)	PS6-47C	Steel Ball
PS6-10A	Paper Washer	PS6-47D	Steel Ball Spring
PS6-11	End Gear	PS6-47E	Flygate
PS6-12	Circlip	PS6-48	Dust Collection Cover
PS6-13	Ball Bearing	PS6-49	Hoop 25-38
PS6-15	Bearing Cover (small)	PS6-50	Hose 350
PS6-16	Ball Bearing	PS6-51	Cable Sleeve (Small)
PS6-16A	Circlip	PS6-52	Rubber Cover (Small)
PS6-17	Main drive Shaft	PS6-53	Handle Stand (Right)
PS6-17A	Washer	PS6-54	Connector $\varnothing 28$
PS6-18	Semi-circular Key	PS6-55	Soft Plastic Pipe $\varnothing 28$
PS6-19	Tapered Gear	PS6-56	Elliptical Connector
PS6-19A	Washer	PS6-57	Handle Stand (Left)
PS6-20	Collar	PS6-58	Main Handle (Left)
PS6-21	Gear Box	PS6-59	Electric Sensor
PS6-22	Middle Cover	PS6-60	Electric Capacity
PS6-22A	Spring (motor)	PS6-61	Electronic Speed Control Plate
PS6-22B	Wool Cap	PS6-62	Switch
PS6-22C	Washer	PS6-63	Press Plate (for cable sleeve)
PS6-23	Rotor	PS6-64	Main Tube (Front)
PS6-23A	Anti-dust Ring	PS6-65	Clinch Bolt $\varnothing 5$
PS6-24	Ball Bearing	PS6-66	Hinge Sleeve (Front)
PS6-25	Anti-wind Ring	PS6-67	Sealed Ring $\varnothing 1.2$
PS6-26	Screw	PS6-68	Pin $\varnothing 5 \times 45$
PS6-26A	Circular Button $\varnothing 4.2$	PS6-69	Hinge Sleeve (Back)
PS6-27	Stator	PS6-70	Pin $\varnothing 5 \times 16.8$
PS6-27A	Sleeve	PS6-71	Pin $\varnothing 5 \times 30$
PS6-28	Motor Housing	PS6-72	Press Plate Cable (Back)
PS6-28A	Flat Washer	PS6-73	Lock Wrench
PS6-28B	Flexible Washer	PS6-74	Brace
PS6-29	Screw	PS6-75	Sleeve #2
PS6-30	Brush Holder	PS6-76	Wire
PS6-31	Carbon Brush	PS6-77	Press Plate Cable (Front)
PS6-32	Screw	PS6-78	Main Tube (Back)
PS6-33	Coil Spring	PS6-81	Main Handle (Right)
PS6-34	Back Cover	PS6-82	Extension Tube Insert
PS6-34A	Screw	PS6-83	Screw Nut (Back)
PS6-35	Screw	PS6-84	Left Sub-Handle
PS6-36	Press Block (on motor housing)	PS6-85	Black Extension Tube (single access)
PS6-37	Horn Damping	PS6-86	Right Sub-Handle
PS6-38	Rubber Sleeve (Large)	PS6-87	Adjustable Ring
PS6-39	Screw Pin	PS6-88	Protection Connection Adapter
PS6-40	Flexible Sleeve	PS6-89	Screw ST3.9*16
PS6-41	Bush Skirt (full circle)	PS6-98	Sander Hose
PS6-41A	Bush Skirt (half circle)	PS6-99	Sander / Vacuum Hose Connector
PS6-42	Press plate (for sanding pad)		

\*Use only genuine Wallpro® parts on Wallpro® brand power tools. Using other brand parts on Wallpro® tools may affect the operation of the product and void warranty. Repairs undertaken by parties other than a registered repair centre may void the product warranty. Please contact Wallboard Tools Customer Service to locate your nearest repair centre.