

Power Tools & Accessories

■ POWER TOOLS & ACCESSORIES

PAGE

CAULKING GUN & ACCESSORIES	101
POWER MIXER	101
PLASTERBOARD SANDERS & ACCESSORIES	102-103
VACUUMS & ACCESSORIES	104-105
POWER TOOL COMBOS	106
REBATEMATE & ACCESSORIES	107
SCREWGUNS & ACCESSORIES	108



HIGH VOLUME CAULKING

- Tough 10.8V motor
- Large 600ml barrel capacity
- 2 x 1.5a/h Li-Ion batteries
- Fast 35 min charge
- Powerful 392KGF expel force
- Rapid plunger release
- Auto cut off
- Variable speed
- Suits cartridges and sausages

WALLPRO CAULKING GUN

The Wallpro Caulking Gun is perfect for applying long continuous beads of adhesive and caulk packaged in either sausages or cartridges, allowing for the best finish in the quickest amount of time.



Large
600ml
Barrel



Long Lasting
Lithium-ion
Batteries



Auto
Cut Off



Variable
Speed



Tough
10.8V
motor



Rapid
Plunger
Release



392Kgf
Expel
Force



12 Month
Warranty



Parts
Diagram
Available

ASC-121

Code



Barcode



Description



Size



Ctn



ea Exc

CG-600L

9315778998345

Caulking Gun

10.8V

1

\$587.00

WLB-10.8V

9315778998376

Battery Pack for CG-600L

10.8V

1

\$185.00

WLC-UNI

9315778998369

Universal Li-ion Battery Charger

10.8/14.4/18V

1

\$98.00

SV-NS

931577899830

Caulking Gun Nozzles 6pkt

Small

5

\$6.55

SV-NL

931577899823

Caulking Gun Nozzles 6pkt

Large

5

\$6.55

POWER MIXING

WALLPRO POWER MIXER

The Wallpro Power Mixer is a purpose built heavy duty electric mixer designed with power and comfort in mind.

- Powerful 1100 Watt motor
- Variable speed control
- Heavy duty metal gears
- Comfortable double sided rubber grip
- Includes mixing blade and spanner
- Light weight at 3.6kg
- Spare parts available from your Wallpro Tools distributor



Comfortable
Rubber Grip



Heavy Duty
Metal Gears



Powerful 1100
Watt Motor



Variable
Speed



Parts
Diagram
Available

WATCH ON



ASC-132

Code



Barcode



Size



Ctn



ea Exc

PM-1100

9315778997287

1100W

2

\$339.00

PLASTERBOARD SANDING

WALLPRO POWER SANDER

The Wallpro Power Sander is a heavy duty plasterboard sander designed with the professional in mind. It has great balance and comfortable grips and when operated in conjunction with a heavy duty dust extractor will deliver a virtually dust free sanding environment.



- Advanced soft start motor
- Variable Speed 650-1600RPM control
- Unique full movement swivel head - no inefficient screw adjustment
- Includes 4m long vacuum hose and velcro foam adaptor
- Universal connection to industrial dust extractors
- Standard 225mm diameter disc area - suits most Super Pads
- Comfortable cushioned grip
- Full range of spare parts available from your Wallpro distributor



Comfortable
Rubber Grip



12 Month
Warranty



Full Movement
Swivel Head



PAGE
112
Parts
Diagram
Available

ABC 112

Code



Barcode



Description



Size



Ctn



ea Exc

PS-1000

9315778997690

Power Sander 650-1600RPM

550W

1

\$689.00

PSV-225

9315778998451

Velcro Foam Adaptor for PS-1000

225mm

5

\$28.05

PS-BAG

9315778998468

Power Sander Carry Bag for PS-1000 & PC-7800

1

\$50.30

PSH-1

9315778997706

Power Sander Handle for PS-1000

1

\$49.50

WATCH ON



■ No screw adjustments



■ Velcro Foam Adaptor



■ Cushioned grip



■ Soft start motor

PREVIOUS

INDEX

NEXT

PORTER CABLE POWER SANDER

The original Porter Cable plasterboard power sander is designed for fast dustless sanding when used in conjunction with an industrial vacuum.

VFP-225

PC-7800

- Variable-speed dial settings from 1400-2000 RPM
- Brush-type skirt surrounds sanding pad, preventing gouging of wall joints and aiding in dust collection
- Motor located on opposite end of handle from sanding head, providing balance and control
- Articulating sanding head allows user to sand wide area without changing positions
- 225mm sanding disc area
- Tool weighs 3.6kg
- Sander made in Mexico

PAGE
114

Parts
Diagram
Available

ASC-121
Code



Barcode

PC-7800

394047800038

VFP-225

9315778992770

Description

Plasterboard Sander Porter Cable

Velcro Foam Pad for PC-7800

Size

225mm

Ctn

1

5

ea Exc

\$699.00

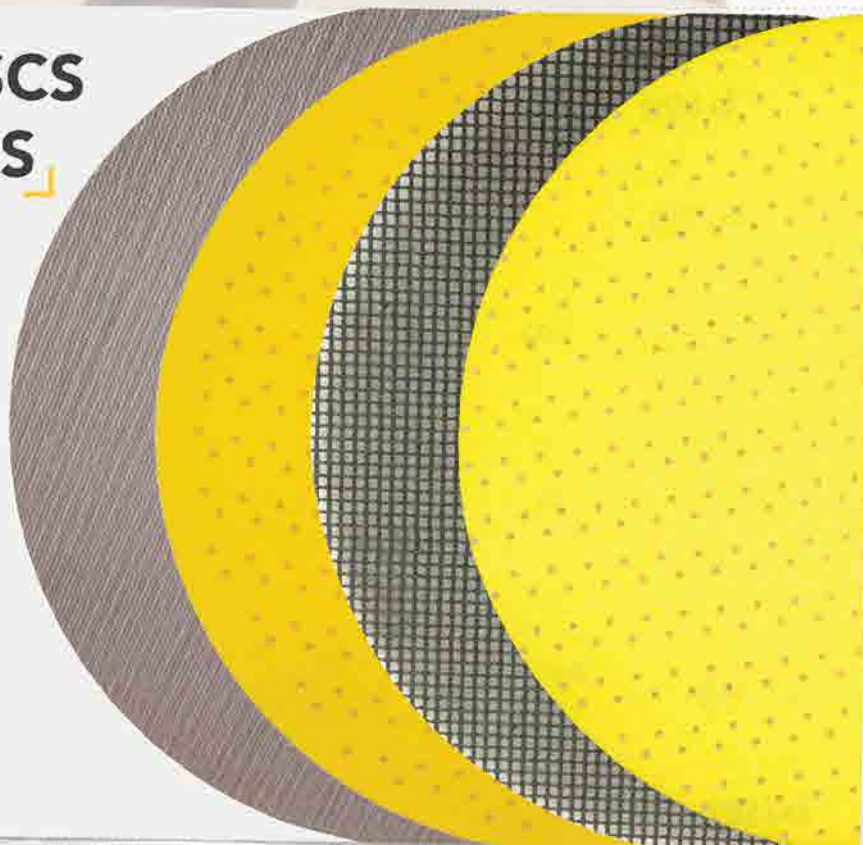
\$31.70

SANDING DISCS & SUPER PADS

Check out our extensive range of velcro backed abrasives made specifically for sanding plasterboard joints with a power sander.

PAGES

6-7



INDEX

NEXT

PREVIOUS

WALLPRO POWER VACUUM

Wallpro's Power Vacuum is an economical but robust heavy duty dust extractor designed for use with the Wallpro Power Sander.



DE-30L

- Powerful 1400 watt motor
- Long lasting stainless steel drum
- Large 30 litre capacity
- Includes reusable cloth bag
- Operates as a wet/dry all purpose vacuum
- Includes accessories and floor tools kit
- Automatically switches on and shuts off when connected to power sanders
- Full range of spare parts available from your Wallpro distributor

 30 Litre Capacity	 Powerful 1400 Watt Motor	 Stainless Steel Drum
 Versatile Wet & Dry Vacuum	 Advanced Soft Start Motor	 PAGE 118 Parts Diagram Available

Code	Barcode	Size	ea Exc
DE-30L	9315778997720	1400W	\$436.50



DE-36-423

VACUUM ACCESSORIES



DE-30L-60

Code	Barcode	Description	ea Exc
DE-30L-60	9315778999526	Power Vac Fabric Dust Bag for DE-30L	\$41.80
DE-36-423	9315778994668	Dust Extractor Paper Bag for DE-36 & DE-30L	\$7.95



■ Sander power point and on/off switches



■ Floor accessories included

STARMIX POWER VACUUM

NEW

The Starmix Vacuum is a high quality German made vacuum that has a hard wearing filter cartridge that not only retains up to 99.9% of dust but also has a long service life.

- Advanced filter technology
- Great 32L capacity
- Noise reduction features
- High performance 1200 watt motor
- Shock resistant plastic drum
- Made in Germany



32 Litre
Capacity



Quiet 1200
Watt Motor



Robust
Wet & Dry
Vacuum



Plastic
Drum



Auto On/
Off Rocker
Switch



PAGE
120
Parts
Diagram
Available

ABC 123

Code

DE-1032



Barcode

401124085524



Size

1200W



ea Exc

\$537.00



The Starmix is tough and easy to maintain, being quiet is a bonus.



■ Sander power point and on/off switches



■ Durable plastic clips

PREVIOUS

INDEX

NEXT

COMBOS

POWER TOOLS

COMBO #2

The trade quality sanding solution that includes the popular Wallpro Sander and Vacuum.



Reduce On-Site Dust



Power Sanding

ABC-122

Code

WPD-2



Description

Wallpro Power Tools Deal



ea Exc

\$1,175.80



Combo Includes:

- 1 x Wallpro Power Sander (PS-1000)
- 1 x Wallpro Power Vacuum (DE-30L)
- 1 x Wallboard Super Pad 5pkt
- 1 x Power Sander Carry Bag (PS-BAG)
- 1 x Paper Dust Bag (DE-36-423)

POWER TOOLS

COMBO #6

Wallboard's premium power sanding combo featuring the advanced Starmix Vacuum and the high performance Wallpro Power Sander.



Reduce On-Site Dust



Power Sanding

ABC-123

Code

WPD-6



Description

Power Tools Deal



ea Exc

\$1,276.30



Combo Includes:

- 1 x Wallpro Power Sander (PS-1000)
- 1 x Starmix Vacuum (DE-1032)
- 1 x Wallboard Super Pad 5pkt
- 1 x Power Sander Carry Bag (PS-BAG)

NEW

PREVIOUS

INDEX

NEXT

REBATE TOOL

REBATEMATE

TOOL & ACCESSORIES

The RebateMate™ is a revolutionary power tool designed to cut a rebate along the edges of plasterboard and cement sheet in preparation for finishing. Using the RebateMate™ results in a strong, seamless joint between the plaster sheets in both ceiling and wall applications.

- Eliminates butt joints
- Designed for plasterboard & cement sheet
- Relatively dust free when combined with commercial vacuum
- Australian patent



■ Plasterboard



■ Cement Sheet



Eliminates
Butt Joints



Reduce On-Site
Dust



RM-D



RM-G



ABC-123

Code



Barcode

RM-T 9315778000451

RM-D 9315778000468

RM-G 9315778000475



Description

RebateMate Tool

Cutting Disc

Adhesive



Size

2L



Ctn

2

1

4



ea Exc

\$450.00

\$51.75

\$55.00

WATCH ON



INDEX

NEXT

PREVIOUS

QUICK FIXING

WALLPRO 18V SCREWGUN & ACCESSORIES

The Wallpro 18 Volt Lithium-ion Collated Screwgun has a rapid 4000RPM motor designed to speed up the sheeting process with fast accurate collated screw fixing.

- Powerful 18V motor
- Rapid 4000 RPM speed
- 3.0 Ah Li-Ion batteries
- Quick push button adjustments
- Rapid jam recovery button
- Fast 1-hour charge with auto cut off
- 25-55mm / 6-8g fastener range
- Variable screw depth adjustment
- Operates in forward and reverse
- Battery charge indicator
- Removable belt clip
- Heavy duty carry case



■ Battery charge indicator



■ Screw depth adjustment



■ Forward/reverse button



■ Attach belt clip



■ Rubber nose tip



■ Quick change to driver



■ Remove conduction assembly



■ Use as screw driver



Powerful
18 Volt
Motor



Rapid
4000 RPM
Speed



Long lasting
Lithium-ion
Batteries



2x 3.0Ah
Batteries



Quick
Adjustment



Screw Range
25-55mm
6-8 gauge



Parts
Diagram
Available

ABC-123

Code



Barcode



Description



Size



Ctn



ea Exc

CSG-4002L

9315778998321

Collated Screwgun 18V Li-ion

18V

4

\$630.00

WLB-18V

9315778998390

Battery Pack for CSG-4002L

18V

1

\$249.00

WLC-UNI

9315778998369

Universal Li-ion Battery Charger

10.8/14.4/18V

1

\$98.00

WATCH ON



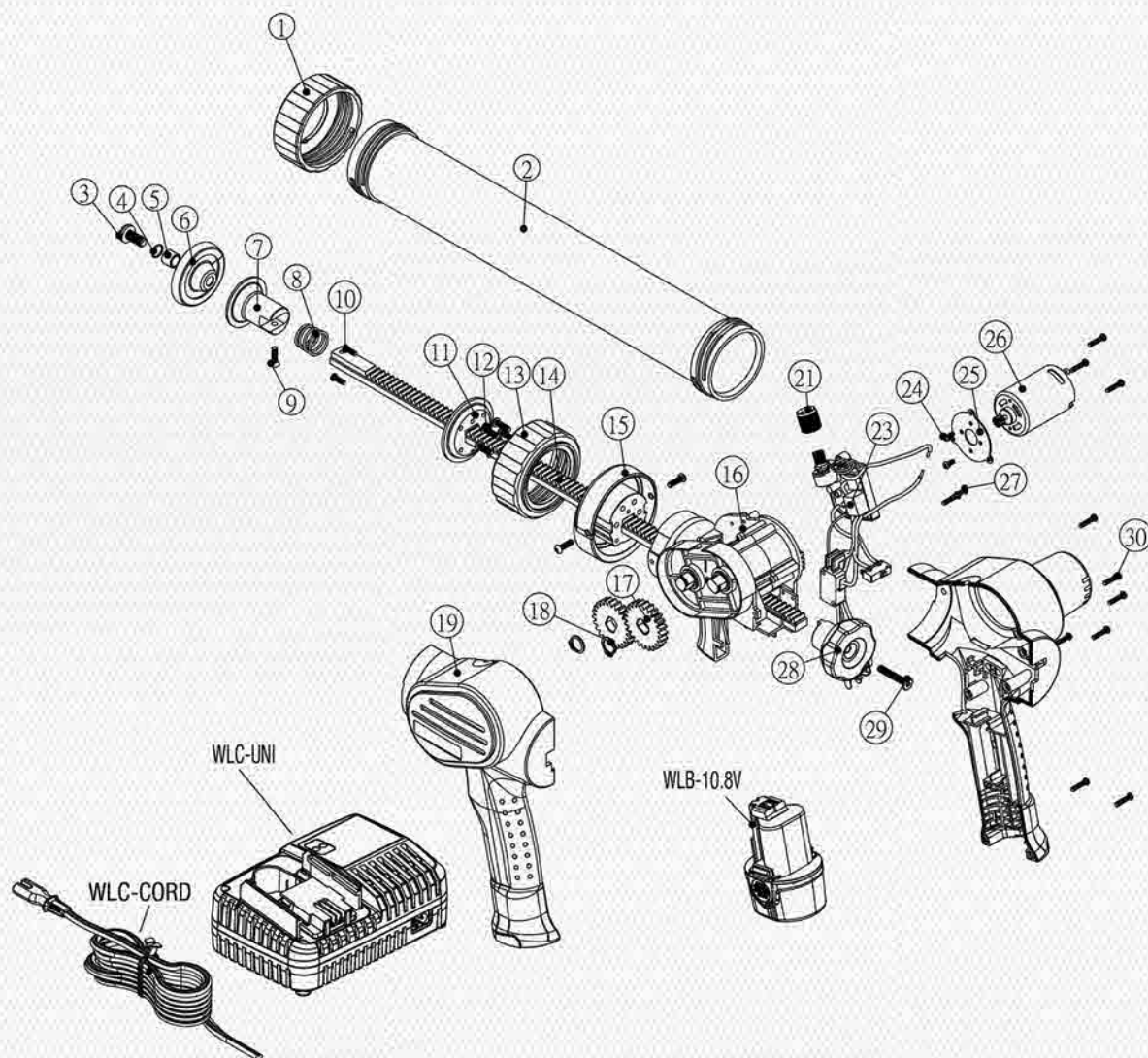


“

The Wallpro Power Sander requires no manual adjustment to switch from walls to ceilings and it's motor is close to the grips for lighter maneuverability. ”

WALLPRO CAULKING GUN CG-600L

Spare Parts Diagram



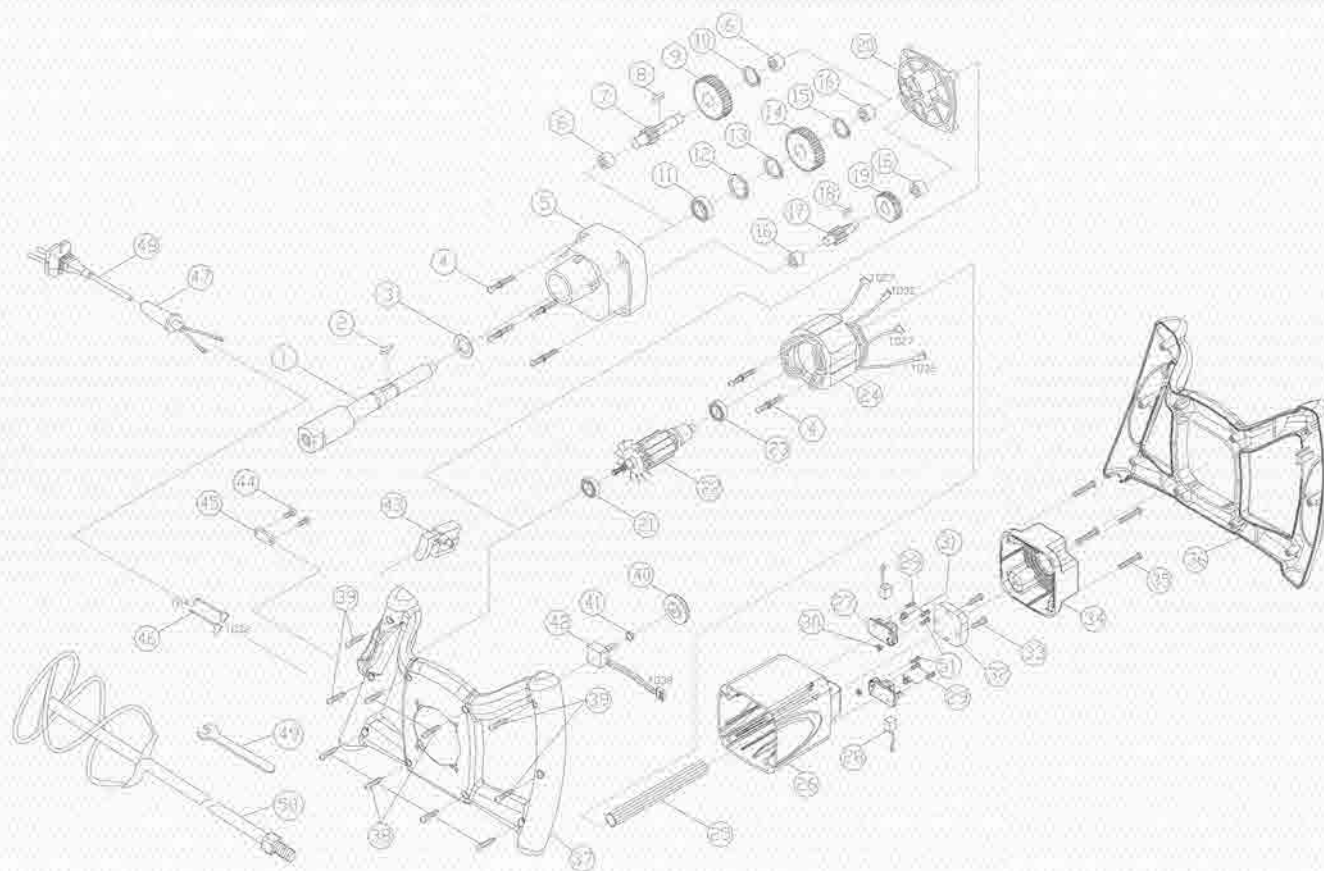
WALLPRO CAULKING GUN SPARE PARTS

Code	Description	\$ ea Exc	Code	Description	\$ ea Exc
CG6-1	Front Cap	\$12.80	CG6-16	Gear Box Assembly	\$98.34
CG6-2	Compound Holder	\$49.46	CG6-17	Gear	\$4.66
CG6-3	Plunger Screw	\$0.58	CG6-18	C-Ring	\$0.58
CG6-4	C-Ring	\$0.58	CG6-19	Housing	\$22.11
CG6-5	Plunger Disk Brush	\$1.16	CG6-21	Speed Control Dial	\$0.69
CG6-6	Plastic Plunger Disk	\$3.12	CG6-23	PCB Assembly	\$93.10
CG6-7	Plunger Disk	\$14.55	CG6-24	Motor Screw	\$0.16
CG6-8	Spring	\$0.58	CG6-26	Motor Assembly	\$39.57
CG6-9	Plunger Adaptor Screw	\$0.16	CG6-27	Screw	\$0.16
CG6-10	Connection Ring Screw	\$0.11	CG6-28	Rack Rear Knob	\$2.91
CG6-11	Connector	\$9.31	CG6-29	Rack Rear Knob Screw	\$0.58
CG6-12	Fixed Cap Screw	\$0.16	CG6-30	Housing Screw	\$0.11
CG6-13	Connecting Cap	\$12.80	WLB-10.8V	Battery Li-Ion 10.8V	\$185.00
CG6-14	Rack	\$65.75	WLC-UNI	Battery Charger Li-Ion 10.8v/14.4v/18v Wallpro	\$98.00
CG6-15	Fixed Cap	\$14.55	WLC-CORD	Power Cord	\$11.06

*Use only genuine Wallpro parts on Wallpro brand power tools. Using other brand parts on Wallpro tools may affect the operation of the product and void warranty. Repairs undertaken by parties other than a registered repair centre may void the product warranty. Please contact Wallboard Tools Customer Service to locate your nearest repair centre.

WALLPRO POWER MIXER PM-1100

Spare Parts Diagram



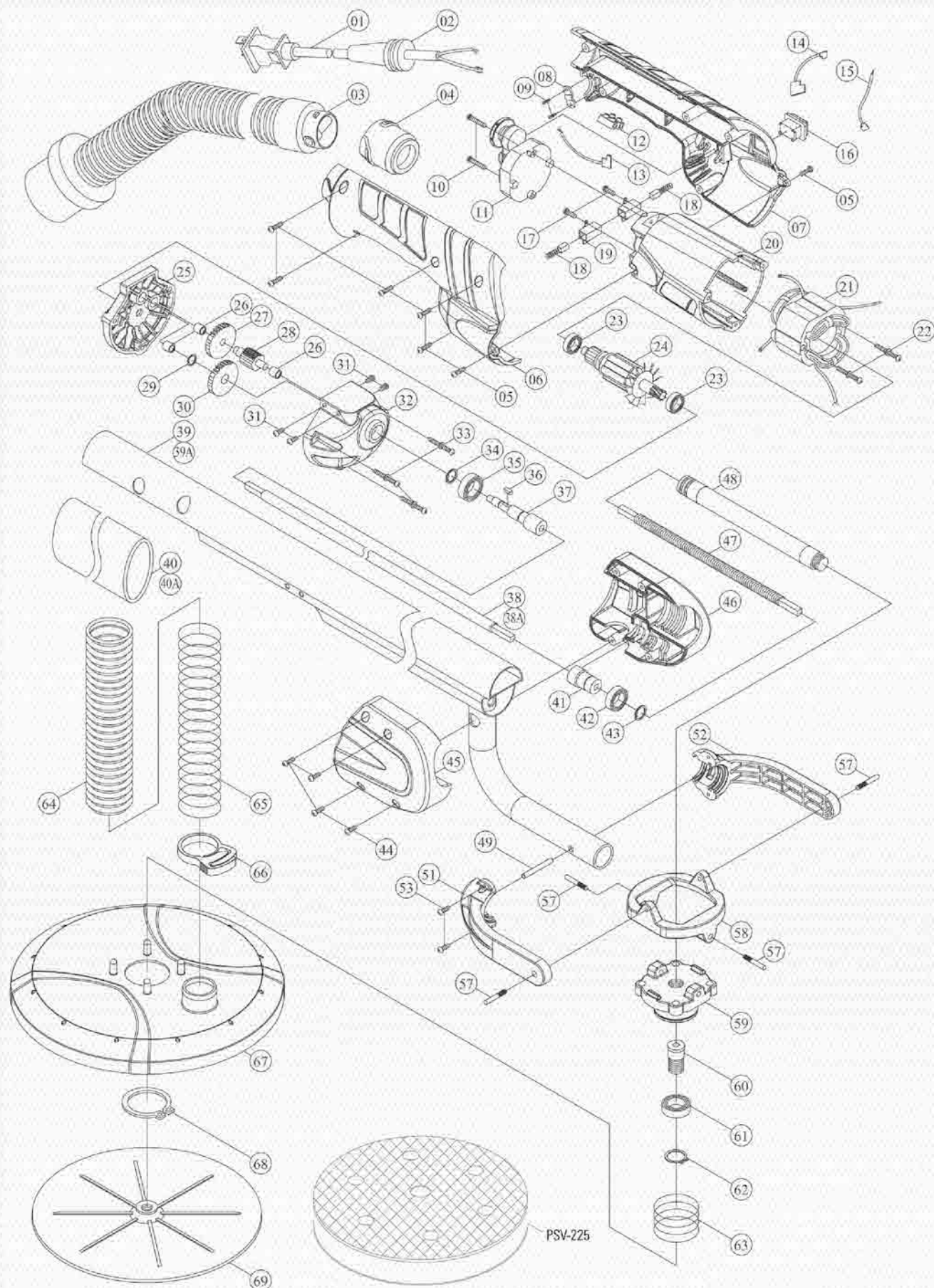
WALLPRO POWER MIXER SPARE PARTS

Code	Description	\$ ea Exc	Code	Description	\$ ea Exc
PM-1	Spindle M14xP2.0	\$20.47	PM-26	Motor housing	\$20.95
PM-2	Woodruff key 5x5x12	\$0.48	PM-27	Brush holder	\$1.75
PM-3	Seal 22x32x7	\$12.91	PM-28	Carbon brush	\$3.02
PM-4	Screw with washer M5x60	\$0.21	PM-29	Screw M4x12	\$0.11
PM-5	Gear housing	\$20.95	PM-30	Hex nut M4x8	\$0.11
PM-6	Needle bearing	\$2.91	PM-31	Spring	\$0.48
PM-7	Gear pinion	\$12.11	PM-32	Sensor 230V	\$75.44
PM-8	Woodruff key 5x5x10	\$0.37	PM-33	Screw M4x25	\$0.11
PM-9	Countershaft 30T	\$11.74	PM-34	Motor cover	\$8.04
PM-10	Snap ring S-12	\$0.21	PM-35	Screw M5x20	\$0.11
PM-11	Bearing	\$8.36	PM-36	Handle body top	\$23.06
PM-12	Snap ring R-35	\$0.37	PM-37	Handle body bottom	\$20.95
PM-13	Snap ring S-17	\$0.21	PM-38	Screw M4x20	\$0.11
PM-14	Spindle gear 34T	\$17.46	PM-39	Screw M4x25	\$0.11
PM-15	Snap ring S-15	\$0.21	PM-40	Speed adjusting wheel	\$0.69
PM-16	Needle bearing	\$2.91	PM-41	Hex nut 1/4"x34	\$0.11
PM-17	Gear pinion	\$11.85	PM-42	Electronic speed adjuster	\$0.69
PM-18	Woodruff key 4x4x8	\$1.06	PM-43	Switch 230V	\$11.06
PM-19	Countershaft 37T	\$9.79	PM-44	Screw M4x14	\$0.11
PM-20	Gearing cover	\$15.61	PM-45	Cord clip	\$0.37
PM-21	Bearing	\$8.36	PM-46	Wire lead	\$1.38
PM-22	Armature 230V	\$97.76	PM-47	Cord armour	\$0.69
PM-23	Bearing 608 2RS	\$3.49	PM-48	Power supply cord	\$12.91
PM-24	Stator 230V	\$54.70	PM-49	Wrench M4x10	\$4.76
PM-25	Wire sheath M8	\$0.95	PM-51	Screw M4x10	\$0.11

*Use only genuine Wallpro parts on Wallpro brand power tools. Using other brand parts on Wallpro tools may affect the operation of the product and void warranty. Repairs undertaken by parties other than a registered repair centre may void the product warranty. Please contact Wallboard Tools Customer Service to locate your nearest repair centre.

WALLPRO POWER SANDER PS-1000

Spare Parts Diagram



INDEX

NEXT

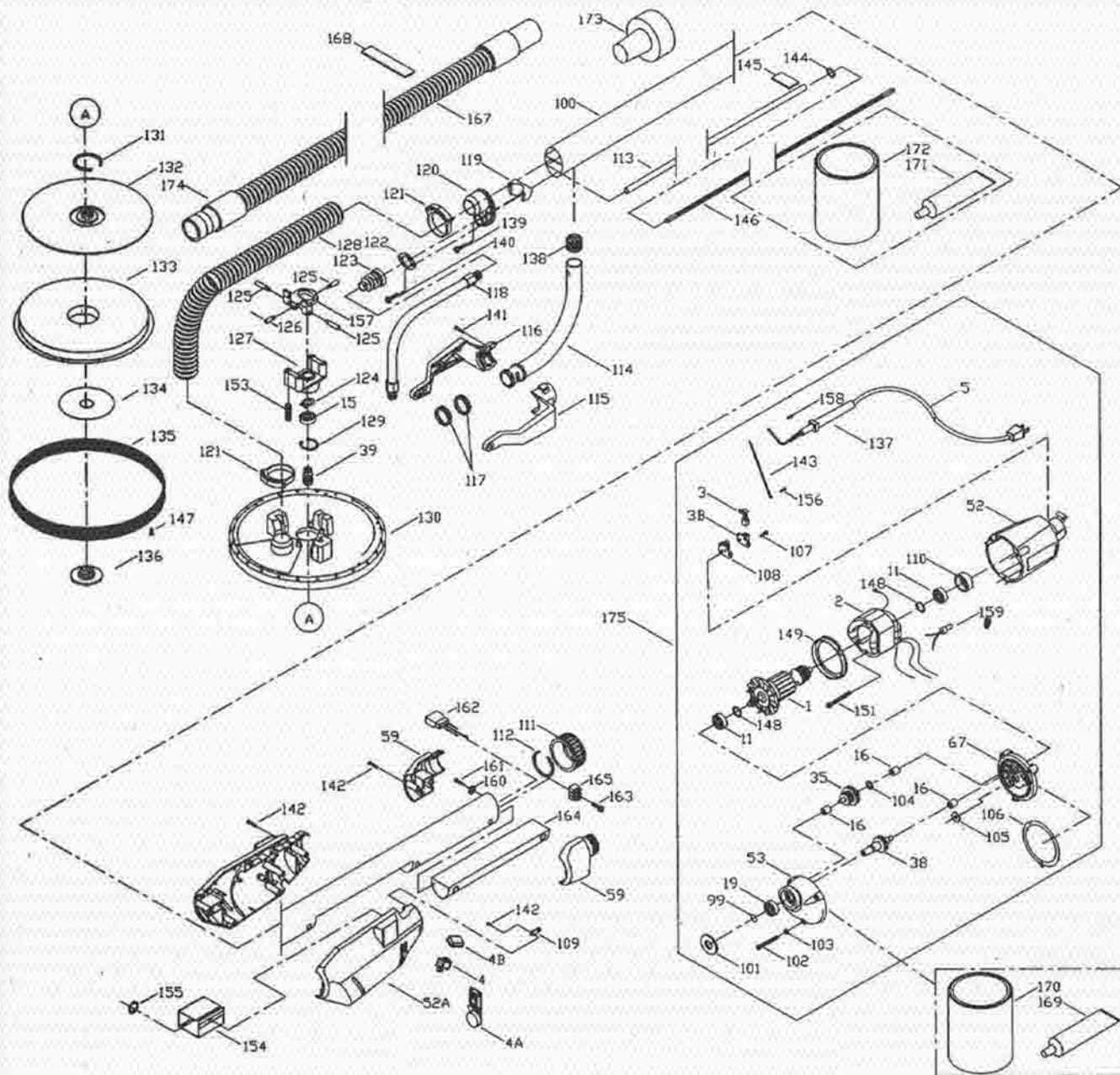
WALLPRO POWER SANDER SPARE PARTS

Code	Description	\$ ea Exc	Code	Description	\$ ea Exc
PS-3	Vacuum extension hose with connector	\$72.74	PS-33	Screw with washer M4x30	\$0.37
PS-4	Hose connector female	\$4.39	PS-34	Internal circlip S-10	\$0.48
PS-5	Screw M4x16	\$0.11	PS-35	Ball bearing	\$21.53
PS-6	Handle cover right	\$7.94	PS-36	Woodruff key 3x10	\$1.96
PS-7	Handle cover left	\$7.94	PS-37	Spindle	\$27.93
PS-8	Cable clip	\$0.21	PS-38A	Drive shaft 704mm	\$72.55
PS-9	Screw M4x14	\$0.11	PS-41	Shaft connector socket	\$17.46
PS-10	Screw M4x25	\$0.21	PS-42	Ball bearing for shaft	\$17.72
PS-11	Speed control unit	\$159.07	PS-43	Internal circlip S-12	\$0.58
PS-12	Wire connector	\$1.64	PS-44	Screw M4x20	\$0.11
PS-13	Wire leader	\$1.64	PS-45	Drive cover right	\$4.39
PS-14	Wire leader (red wire)	\$1.90	PS-46	Drive cover left	\$4.39
PS-15	Wire leader (black wire)	\$1.38	PS-47	Drive cable inner	\$31.42
PS-16	Motor switch (JEC)	\$3.86	PS-48	Drive shaft cover	\$34.33
PS-16A	Motor switch wallpro (TRANSMIT)	\$3.86	PS-49	Holding pin 5x30	\$7.94
PS-17	Screw M4x10	\$0.11	PS-51	Fork right	\$34.91
PS-18	Carbon brush 2pkt	\$8.83	PS-52	Fork left	\$34.91
PS-19	Carbon brush holder (1 Hole) 1pc	\$5.82	PS-53	Screw M4x8	\$0.32
PS-19A	Carbon brush holder (2 holes) 1pc	\$5.82	PS-57	Screw M5	\$0.37
PS-20	Motor housing	\$20.95	PS-58	Pivot frame	\$26.19
PS-20A	Motor housing (2 holes)	\$20.95	PS-59	Pivot connecting bracket	\$54.70
PS-21	Stator	\$61.10	PS-60	Connecting spindle	\$17.40
PS-22	Stator screw M4x50	\$0.37	PS-61	Ball bearing for head	\$23.75
PS-23	Ball bearing	\$12.80	PS-62	External circlip R-32	\$1.27
PS-24	Armature	\$139.66	PS-63	Spring	\$2.54
PS-25	Gear plate	\$29.31	PS-64	Vacuum hose	\$15.34
PS-26	Bushing	\$1.22	PS-65	Spring	\$6.40
PS-27	Intermediate gear	\$15.92	PS-66	Plastic clip	\$2.38
PS-28	Intermediate gear pinion	\$22.32	PS-67	Sanding plate cover	\$24.44
PS-29	Bushing	\$1.27	PS-68	Internal circlip S-40	\$1.75
PS-30	Output gear	\$17.46	PS-69	Sanding plate base	\$34.91
PS-31	Screw M5x10	\$0.69	PS-SMK	Switch Modification Kit for PS-1000	\$9.90
PS-32	Gear case	\$43.64	PSV-225	Power Sander double sided velcro foam pad	\$28.05



PORTER CABLE SANDER PC-7800

Spare Parts Diagram



*Use only genuine Porter Cable parts on Porter Cable brand sander. Using other brand parts on a Porter Cable sander tools may affect the operation of the product and void warranty. Repairs undertaken by parties other than a registered repair centre may void the product warranty. Please contact Wallboard Tools Customer Service to locate your nearest repair centre.

INDEX

NEXT

PREVIOUS

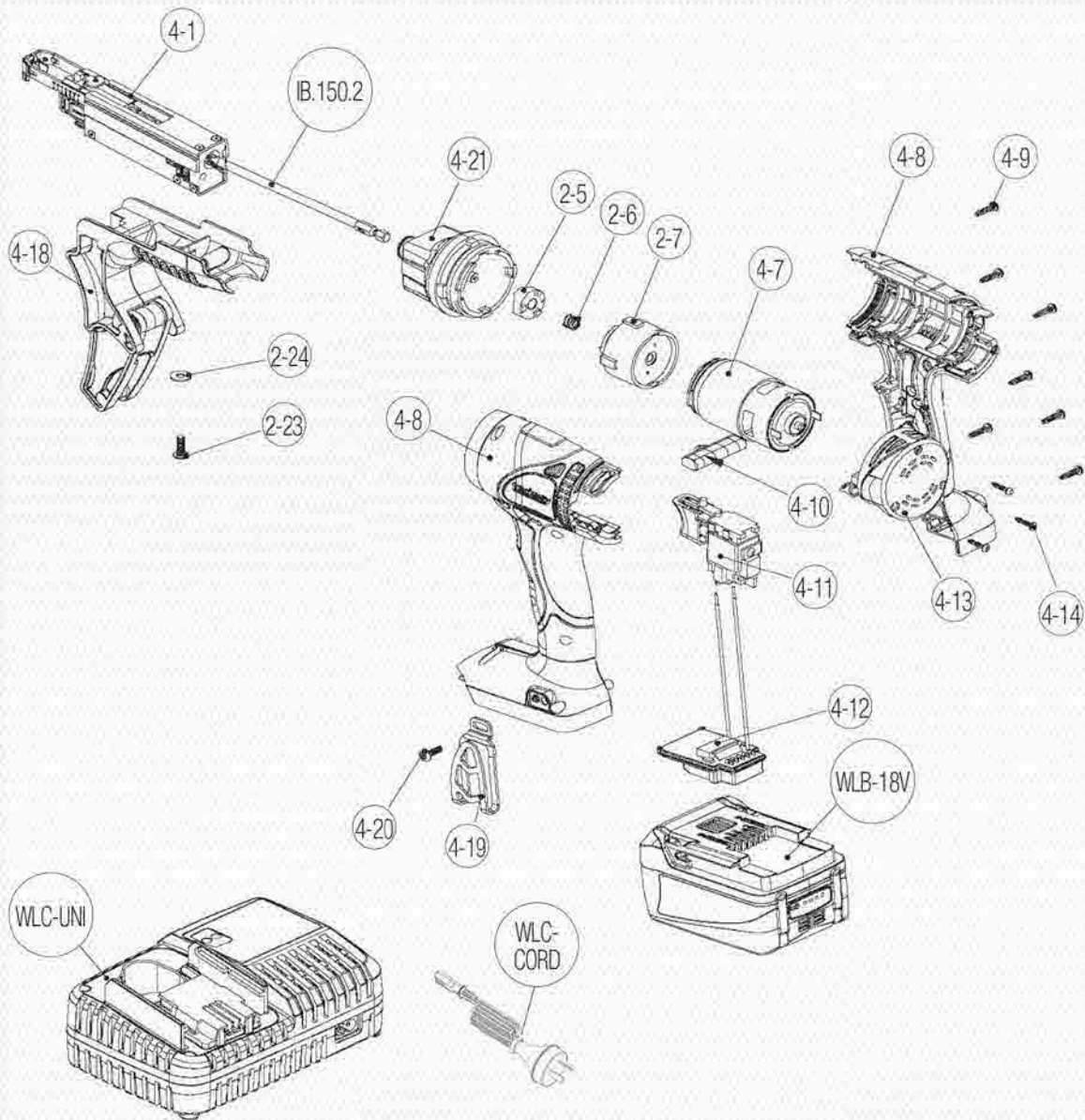
PORTER CABLE SANDER SPARE PARTS

Code	Description	\$ ea Exc	Code	Description	\$ ea Exc
PC-1	Armature 230V	\$203.67	PC-122	Clamp plate	\$7.51
PC-2	Field 230V	\$148.85	PC-123	Bellows	\$30.67
PC-3	Brush 2pkt	\$39.57	PC-124	Retaining ring	\$12.60
PC-3B	Brush holder	\$18.34	PC-125	Guide pin (long)	\$5.07
PC-4	On/Off switch 230V	\$49.81	PC-126	Guide pin (short)	\$8.96
PC-4A	Variable speed control 230V	\$106.02	PC-127	Support housing	\$72.39
PC-4B	On/Off switch dust cover	\$4.84	PC-128	Hose	\$34.40
PC-5	Power cord 230V	\$87.75	PC-129	Snap-ring	\$3.55
PC-11	Bearing	\$11.17	PC-130	Pad housing	\$63.26
PC-15	Bearing	\$24.74	PC-131	Snap-ring	\$3.55
PC-16	Needle bearing	\$21.53	PC-132	Back-up pad	\$115.86
PC-19N	Bearing	\$91.94	PC-134	Washer	\$15.31
PC-21	Plastic bush	\$8.33	PC-135	Brush / skirt	\$81.58
PC-35	Idler gear assembly	\$104.97	PC-136	Nut	\$16.24
PC-38	Spindle gear assembly	\$133.84	PC-137	Reliever	\$3.55
PC-39	Spindle	\$63.84	PC-138	Dust plug	\$5.07
PC-52	Motor housing	\$54.06	PC-139	Screw	\$2.39
PC-52A	Housing set	\$81.58	PC-141	Screw	\$3.55
PC-59	Vacuum adaptor housing set	\$28.46	PC-142	Screw	\$3.49
PC-67	Intermediate plate	\$89.85	PC-143	Lead	\$15.48
PC-99	Snap-ring	\$3.55	PC-144	O-ring	\$2.74
PC-100	Main tube 230V	\$218.04	PC-145	Seal	\$9.31
PC-101	Foam seal	\$6.40	PC-146	Drive shaft	\$88.45
PC-102	Screw	\$2.39	PC-149	Baffle	\$2.59
PC-103	Washer	\$2.39	PC-151	Screw	\$2.39
PC-104	Washer	\$2.39	PC-153	Spring	\$3.55
PC-105	Slinger	\$2.74	PC-154	Insulator	\$6.23
PC-106	Gasket	\$3.55	PC-155	Push-nut	\$3.55
PC-107	Screw	\$2.39	PC-156	Screw	\$2.39
PC-108	Brush insulator	\$3.55	PC-157	Pivot plate	\$57.09
PC-109	Cord clamp	\$2.74	PC-158	Screw	\$2.39
PC-110	Bearing mount	\$3.55	PC-159	Wire connector 230V	\$2.39
PC-111	Hose clamp nut	\$16.24	PC-160	Lock washer	\$2.39
PC-112	Clamp ring	\$7.98	PC-162	Filter	\$187.78
PC-113	Guide tube	\$19.96	PC-163	Screw	\$7.98
PC-114	Support tube	\$76.41	PC-164	Tube insulator	\$21.71
PC-115	Support arm left	\$51.32	PC-167	Vacuum hose assembly inc. 173 & 174	\$190.86
PC-116	Support arm right	\$51.32	PC-173	Hose adaptor	\$27.30
PC-117	Nylon bushing	\$8.33	PC-174	Hose connector	\$33.87
PC-118	Casing	\$200.29	PC-175	Motor assembly complete	\$310.00
PC-119	Tube clamp plate	\$19.50	PC-PINS	Guide pins set (PC-125 x 3, PC-126 x 1)	\$46.27
PC-120	Tube support housing	\$35.61	VFP-225	Velcro Foam Adaptor (PC-7800)	\$31.70
PC-121	Hose clamp	\$16.64			



WALLPRO COLLATED SCREWGUN 18V LI-ION CSG-4002L

Spare Parts Diagram



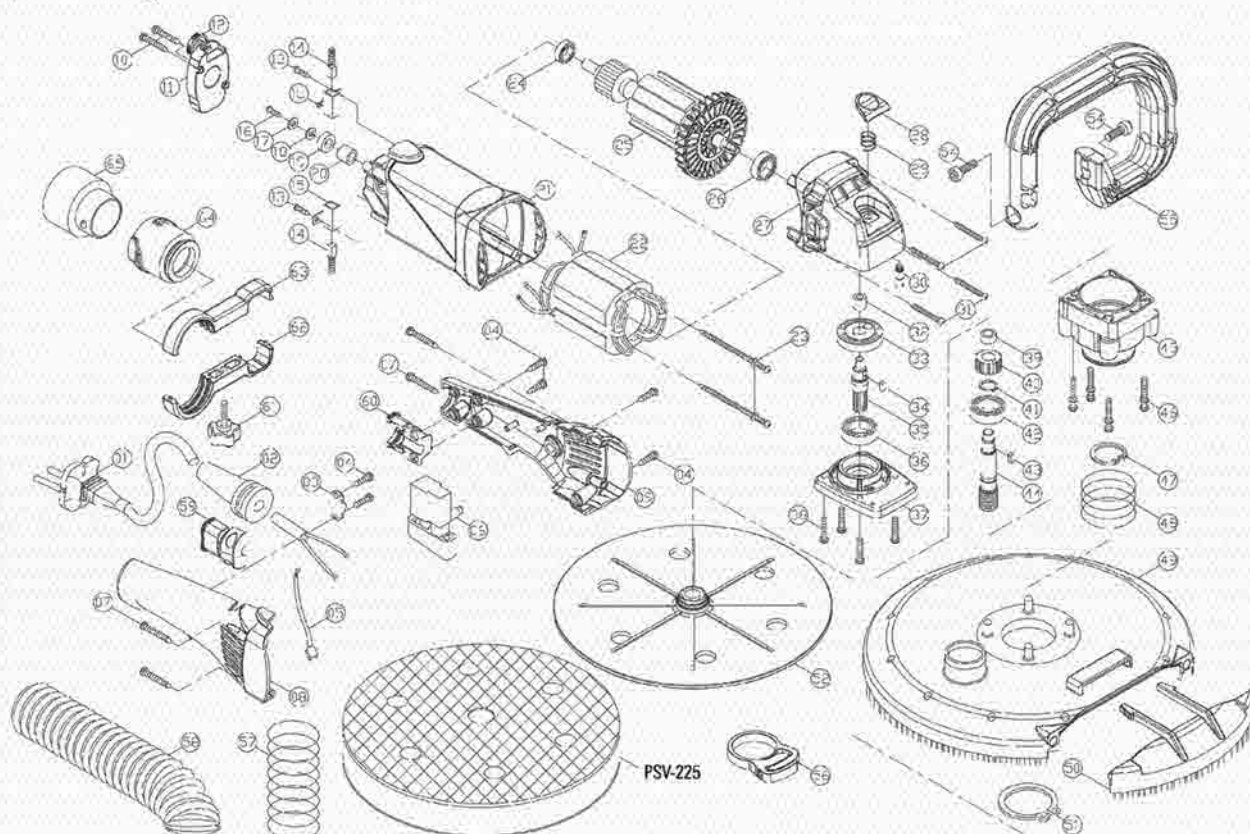
WALLPRO POWER HAND SANDER SPARE PARTS

Code	Part Description	\$ ea Exc	Code	Part Description	\$ ea Exc
CSG4-1	Conduction assembly	\$208.90	CSG2-23	Screw	\$0.32
CSG2-5	Clutch "B"	\$8.15	CSG2-24	Washer	\$0.32
CSG2-6	Spring	\$0.32	CSG4-18	Side handle assembly	\$16.29
CSG2-7	Gear box assembly	\$39.41	CSG4-19	Belt hook	\$2.91
CSG4-7	Motor assembly	\$62.85	CSG4-20	Belt hook screw	\$0.11
CSG4-8	Complete main housing	\$20.37	CSG4-21	Front cover assembly	\$48.30
CSG4-9	Housing screw	\$0.21	WLB-18V	Battery pack 18V Li-ion	\$249.00
CSG4-10	Forward/Reverse switch	\$0.90	WLC-UNI	Battery charger	\$98.00
CSG4-11	Main switch	\$36.08	WLC-CORD	Power cord	\$11.06
CSG4-12	Discharge protector	\$40.73	IB.150.2	Bit tip 154mm 4pkt for Wallpro Screwguns	\$19.65
CSG4-13	Housing back cover	\$4.07			
CSG4-14	Screw	\$0.11			

*Use only genuine Wallpro parts on Wallpro brand power tools. Using other brand parts on Wallpro tools may affect the operation of the product and void warranty. Repairs undertaken by parties other than a registered repair centre may void the product warranty. Please contact Wallboard Tools Customer Service to locate your nearest repair centre.

WALLPRO POWER HAND SANDER PHS-1200

Spare Parts Diagram

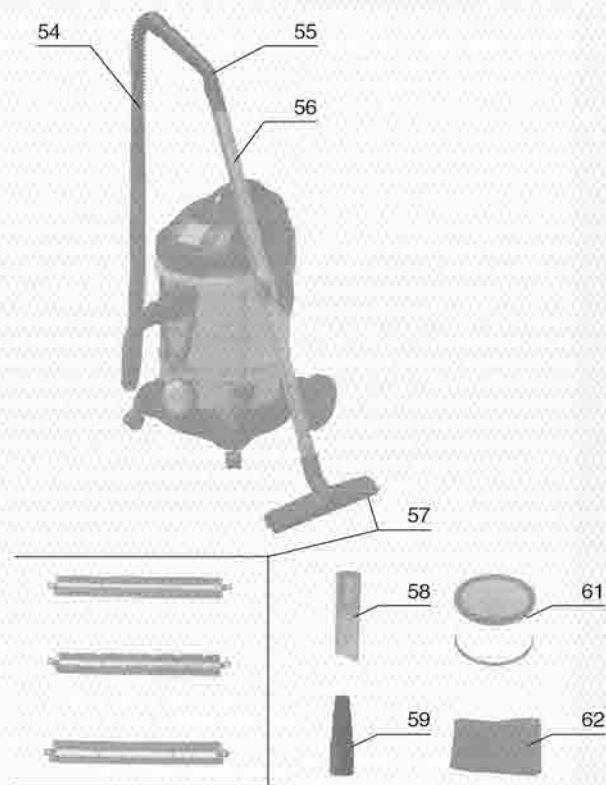
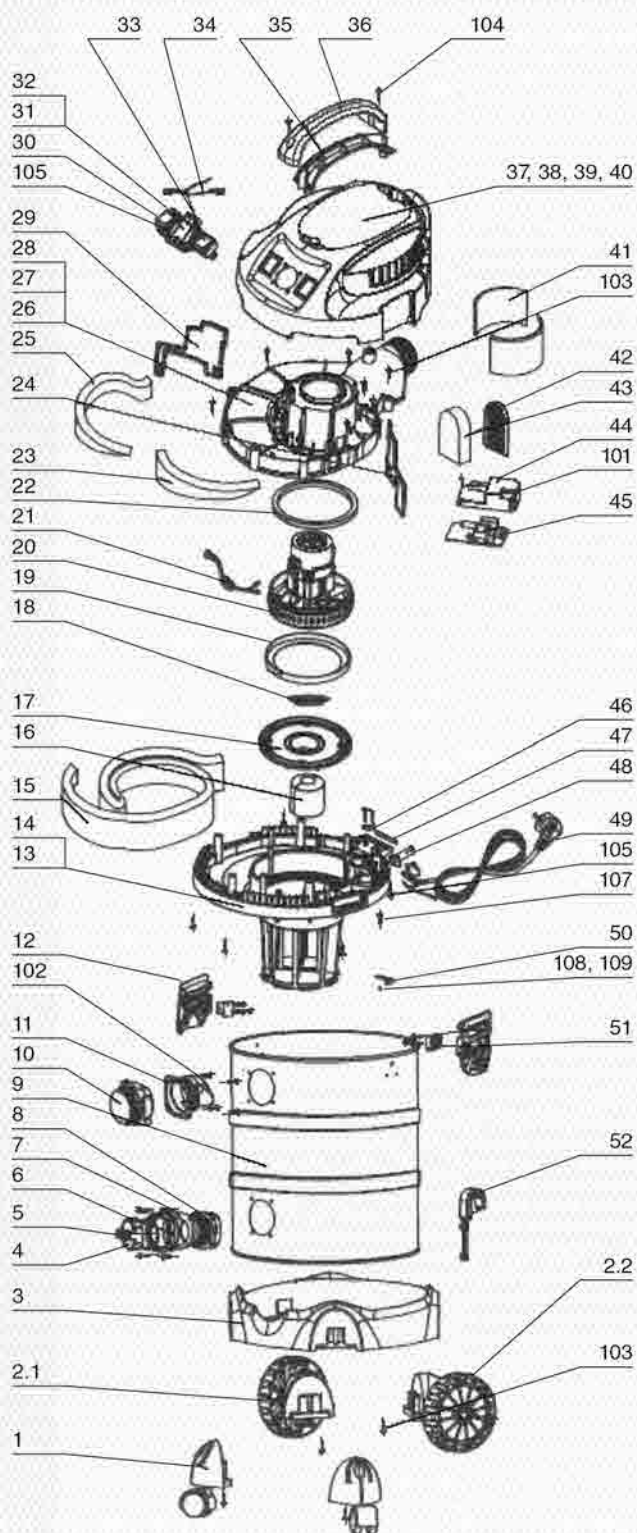


WALLPRO POWER HAND SANDER SPARE PARTS

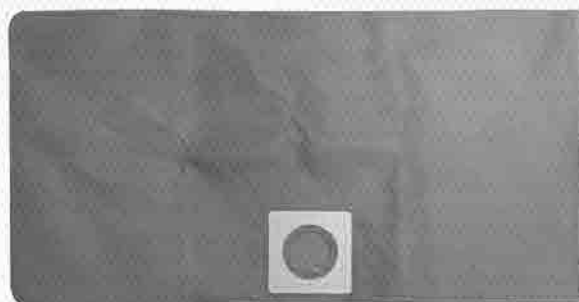
Code	Description	\$ ea Exc	Code	Description	\$ ea Exc
PHS-1	Power supply cable 3m	\$24.44	PHS-34	Parallel key 4x4x8	\$1.75
PHS-2	Cord armour	\$2.80	PHS-35	Input gear shaft	\$27.24
PHS-3	Cable clip	\$0.21	PHS-36	Ball bearing	\$15.71
PHS-4	Screw M4x14	\$0.21	PHS-37	Gear plate	\$27.93
PHS-5	Wire lead	\$1.27	PHS-38	Screw M4x16	\$0.21
PHS-6	Switch	\$24.44	PHS-39	Bushing 8x12x6	\$1.06
PHS-7	Screw M4x25	\$0.21	PHS-40	Spindle gear	\$23.06
PHS-8	Right handle cover	\$8.04	PHS-41	External circlip	\$0.48
PHS-9	Left handle cover	\$8.04	PHS-42	Ball bearing	\$20.95
PHS-10	Screw M4x20	\$0.21	PHS-43	Parallel key	\$1.64
PHS-11	Electronics unit	\$150.13	PHS-44	Spindle	\$21.32
PHS-12	Thumb wheel	\$1.06	PHS-45	Gear cover	\$35.60
PHS-13	Brush screw M4x8	\$1.06	PHS-46	Screw M4x25	\$0.21
PHS-14	Carbon brush	\$4.55	PHS-47	Internal circlip	\$0.95
PHS-15	Carbon brush holder	\$5.08	PHS-48	Spring 40L	\$2.33
PHS-16	Screw M4x8	\$0.11	PHS-49	Sanding plate cover	\$38.41
PHS-17	Flat washer M4	\$0.11	PHS-50	Half moon door	\$11.16
PHS-18	Plastic washer	\$0.32	PHS-51	External circlip	\$2.12
PHS-19	Pickup magnet	\$2.12	PHS-52	Sanding plate base	\$59.35
PHS-20	Spacer	\$2.12	PHS-54	Socket cap screw M8x16	\$1.06
PHS-21	Motor housing	\$19.57	PHS-55	Bail handle	\$22.32
PHS-22	Stator	\$67.61	PHS-56	Plastic hose clip	\$2.12
PHS-23	Stator screw M4x60	\$0.95	PHS-57	Spring 363L	\$5.61
PHS-24	Ball bearing	\$11.06	PHS-58	Vacuum hose	\$19.57
PHS-25	Armature	\$139.18	PHS-59	Clamp piece right	\$2.70
PHS-26	Ball bearing	\$20.95	PHS-60	Clamp piece left	\$2.70
PHS-27	Gear case	\$113.10	PHS-61	Thumb knob	\$1.85
PHS-28	Spindle lock button	\$1.38	PHS-62	Hose bracket lower	\$3.49
PHS-29	Spring 13.5L	\$0.37	PHS-63	Hose bracket upper	\$3.49
PHS-30	Spindle lock	\$2.80	PHS-64	Bayonet swivel connector	\$3.39
PHS-31	Screw M4x30	\$0.21	PHS-65	Hose bayonet connector	\$4.44
PHS-32	Bushing 6x10x8	\$1.06	PSV-225	Power Sander double sided velcro foam pad	\$28.05
PHS-33	Bevel gear M1.0	\$67.02			

WALLPRO POWER VACUUM DE-30L

Spare Parts Diagram



CARBON BRUSH DE-30L-53



CLOTH DUST BAG DE-30L-60

PREVIOUS

INDEX

NEXT

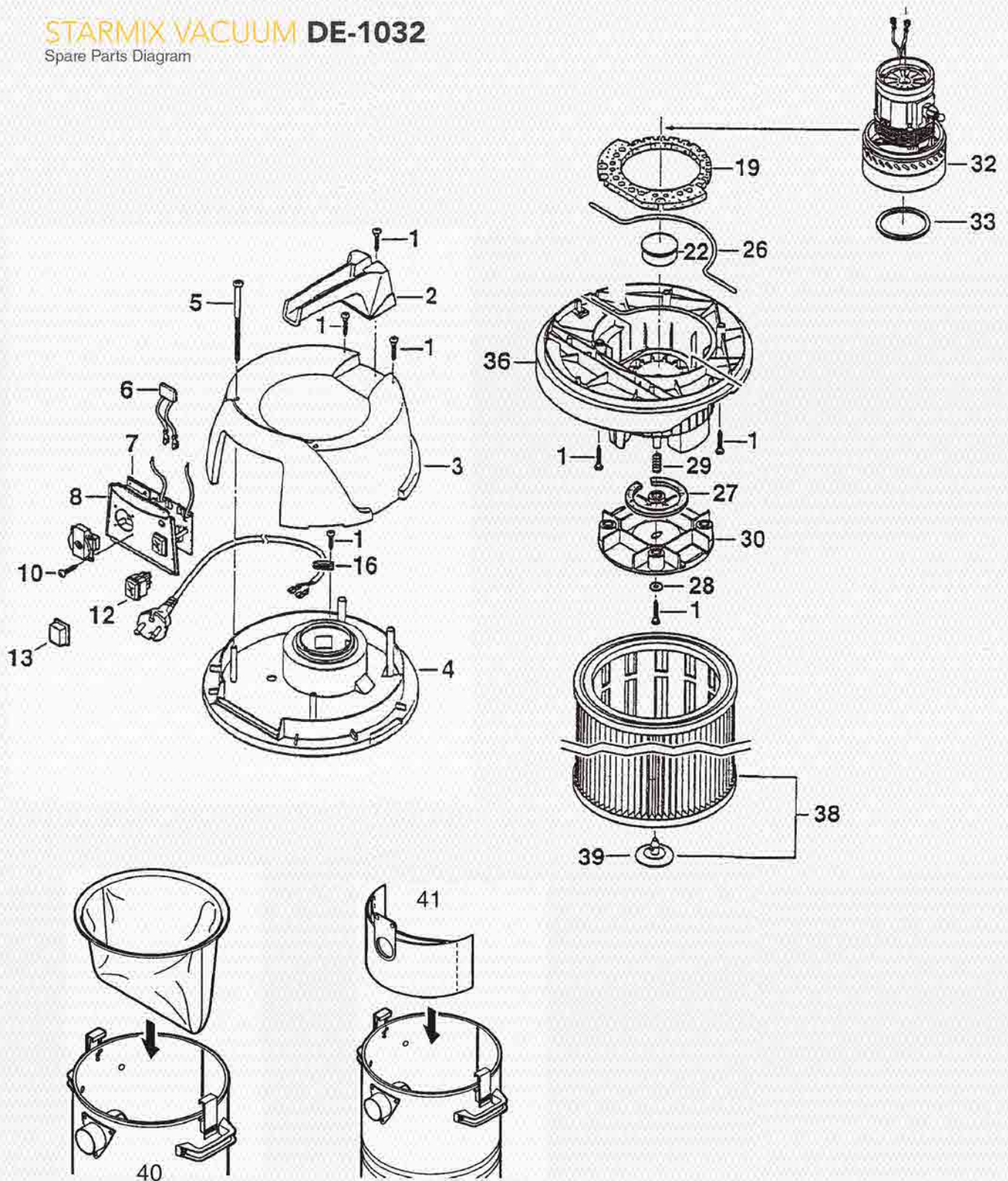
WALLPRO POWER VACUUM SPARE PARTS

Code	Description	\$ ea Exc	Code	Description	\$ ea Exc
DE-30L-1	Metal castor	\$11.37	DE-30L-35	Lower handle	\$4.81
DE-30L-2-1	Big wheel right	\$18.04	DE-30L-36	Upper handle	\$4.81
DE-30L-2-2	Big wheel left	\$18.04	DE-30L-37	Upper cover	\$32.90
DE-30L-3	Tank/drum base	\$49.41	DE-30L-38	Anti-noise foam	\$1.53
DE-30L-4	Waterspout cover	\$4.81	DE-30L-41	Anti-noise foam	\$1.53
DE-30L-5	Seal ring	\$1.53	DE-30L-42	Protection web	\$3.17
DE-30L-6	Waterspout	\$1.53	DE-30L-43	Sponge	\$3.17
DE-30L-7	Drain inlet sponge loop	\$1.53	DE-30L-44	Waterproof cover	\$3.17
DE-30L-8	Waterspout seat	\$1.53	DE-30L-45	PCB	\$66.81
DE-30L-9	Tank/Drum 30L steel	\$148.54	DE-30L-46	Cord clamp	\$1.53
DE-30L-10	Suction seat	\$2.38	DE-30L-48	Sleeve	\$1.53
DE-30L-11	Suction press board	\$2.38	DE-30L-49	Cable	\$66.81
DE-30L-12	Metal clips	\$11.43	DE-30L-50	Connector	\$1.53
DE-30L-13	Lower cover	\$49.41	DE-30L-51	Power cable and clip seat	\$1.53
DE-30L-14	Sponge loop	\$4.81	DE-30L-52	Cord hook	\$3.17
DE-30L-15	Anti-noise Foam	\$3.17	DE-30L-53	Carbon brush	\$32.00
DE-30L-16	Floater cup	\$2.70	DE-30L-54	Suction	\$56.97
DE-30L-17	Tray	\$8.15	DE-30L-55	Air adjustable elbow	\$9.10
DE-30L-18	Plastic fence	\$2.38	DE-30L-56	Telescopic tube	\$56.97
DE-30L-19	Seal ring	\$1.53	DE-30L-57	Brush nozzle set	\$29.47
DE-30L-20	Motor	\$247.73	DE-30L-58	Crevice tool	\$8.68
DE-30L-21	Inductor	\$7.78	DE-30L-59	Hose adaptor	\$9.57
DE-30L-22	Seal Ring	\$1.53	DE-30L-60	Fabric dust bag	\$41.80
DE-30L-23	Anti-noise foam	\$1.53	DE-30L-61	Paper filter cartridge	\$40.73
DE-30L-24	Air block board	\$3.17	DE-30L-62	Foam filter	\$32.00
DE-30L-25	Anti-noise foam	\$1.53	DE-30L-101	Screw ST2.9x12	\$1.53
DE-30L-28	Air/outlet, damping bar, seal	\$44.44	DE-30L-102	Screw ST4.2x14	\$2.38
DE-30L-29	Air block board	\$1.53	DE-30L-103	Screw ST4.2x16	\$1.80
DE-30L-30	Switch	\$8.15	DE-30L-104	Screw ST4.2x16	\$1.80
DE-30L-31	Synchro socket	\$16.40	DE-30L-105	Screw ST4.2x14	\$2.38
DE-30L-32	Socket press board	\$1.38	DE-30L-106	Screw ST3.9x8	\$3.17
DE-30L-33	Switch	\$8.15	DE-30L-107	Screw M4x10	\$0.69
DE-30L-34	Lead	\$3.17	DE-30L-108	Nut M4	\$1.53



STARMIX VACUUM DE-1032

Spare Parts Diagram



57 - Floor Tool Kit



STARMIX VACUUM MOTOR HEAD ASSEMBLY SPARE PARTS

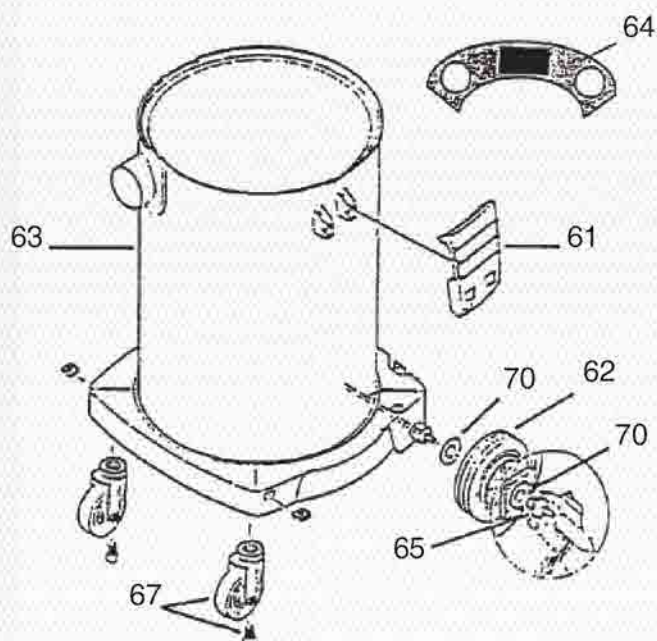
Code	Description	\$ ea Exc
DE-1032-1	Screw	\$2.24
DE-1032-2	Handle	\$28.52
DE-1032-3	Hood	\$56.64
DE-1032-4	Upper housing	\$49.91
DE-1032-5	Oval head screw	\$3.57
DE-1032-6	Capacitor	\$9.78
DE-1032-7	Electronic board	\$137.48
DE-1032-8	Control Panel inc socket (NZ/AUS)	\$25.19
DE-1032-10	Taping screw with countersunk head	\$2.24
DE-1032-12	On/off push-button switch	\$28.52
DE-1032-13	Cover for switch	\$5.41
DE-1032-16	Strain relief clamp	\$1.73
DE-1032-19	Silencer	\$20.24
DE-1032-22	Float	\$8.51
DE-1032-26	Rubber part	\$7.13
DE-1032-27	Motor protection filter	\$2.65
DE-1032-28	Washer	\$2.24

Code	Description	\$ ea Exc
DE-1032-29	Pressure spring	\$2.53
DE-1032-30	Vibrator / Adaptor Plate	\$25.07
DE-1032-32	Motor Starmix 230V 1200W	\$269.00
DE-1032-33	Seal	\$8.34
DE-1032-36	Lower housing	\$96.43
DE-1032-38	Pleated filter	\$185.50
DE-1032-39	Bayonet fixing	\$6.04
DE-1032-40	Pre-filter Sac-cloth	\$152.00
DE-1032-41	Paper dust bag	\$15.30
DE-1032-42	Carbon brushes	\$49.50
DE-1032-51	Flexible suction hose 3.2m	\$77.70
DE-1032-52	Tube handle	\$20.43
DE-1032-53	Suction tube	\$18.60
DE-1032-54	Crevice nozzle	\$9.80
DE-1032-55	Rubber nozzle	\$13.45
DE-1032-56	Floor tool	\$37.20
DE-1032-57	Floor tools kit	\$104.00

SOLD SEPARATELY

STARMIX VACUUM PLASTIC CANISTER SPARE PARTS

Code	Description	\$ ea Exc
DE-1032-61	Locking device	\$7.95
DE-1032-62	Wheel	\$29.33
DE-1032-63	Complete canister assembly 32L (parts 61, 62 and 67)	\$228.28
DE-1032-64	Tube holder	\$22.43
DE-1032-65	Screw	\$2.24
DE-1032-67	Castor	\$10.93
DE-1032-70	Washer	\$2.24



INDEX

PREVIOUS